



THE STONE COLLECTION

SUGARI SANDSTONE

Sugari is a quartzitic sandstone, which makes it denser stone than most other types of stone. The vein cut highlights the tight grained composition, which allows for a very consistent and contemporary appearance. **Stocked finish:** Honed (Unsealed, or Stained & Sealed). **Stocked sizes:** shown below. **Stocked** FOB Los Angeles. Custom sizes and finishes orders are subject to a 500 sq ft minimum quantity requirement and 8-10 week lead time. Please allow 8-10 week lead time.

Stone is a natural product, **please expect some color variation.**



Flamed floor



Honed fireplace & Flamed floor



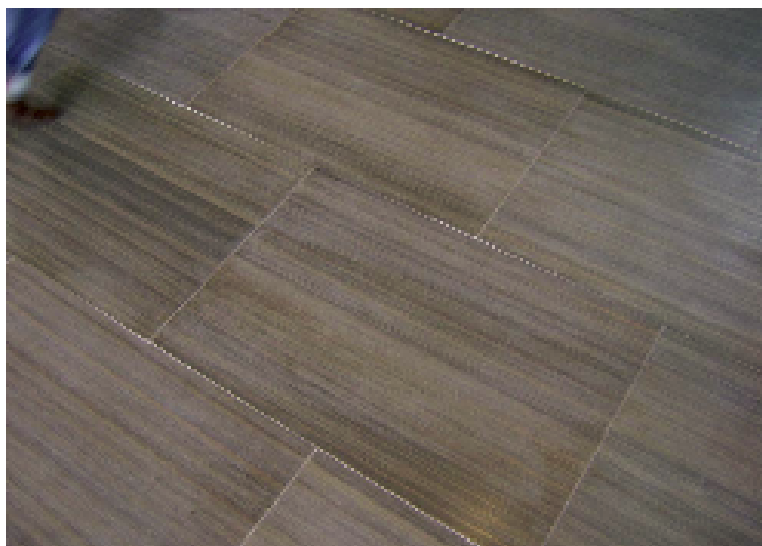
Stocked Sizes

Tile: 16 x 24 x 5/8

Slab: approx. 31 x 71 x 3/4 Slab

Plank / Border: 3x24x5/8 or 6x24x5/8

For all sandstone installations, an epoxy thin-set (contains no water), such as LATICRETE® Latipoxy 300 or LATICRETE® 254R Platinum (for rapid-set) should be used. After installation it is important to seal sandstone with a high-quality sealer, such as Dry Treat's STAIN-PROOF Original™ (2 coat application- ideal when grout release is needed) or META CRÈME™ (1-coat application- "green product"). See CTM Sandstone Install Instructions for more information and always choose a licensed installer.



SUGARI Honed & Sealed (Vein Cut)