



THE **STONE COLLECTION**  
Crema Bella Limestone

**Stocked finishes:** Honed or Fine-Chiselled. **Stock size:** 16 x 24 x 5/8 Stock FOB: Los Angeles warehouse.

**Slab Finishes:** Honed, Brushed, Bush-hammered or Sandblasted. **Slab Sizes:** approx. 55 x 86 x 1-1/4" or 2"

Custom sizes & finishes: subject to 500 sq ft minimum & 8-10 week lead time. Usage: Commercial & Residential; Interior & Exteriors.

~ **Recommendation: seal with Dry-Treat 40SK™ Surface Consolidator followed by Dry-Treat STAIN-PROOF Original™ Sealer.** ~

Contact your CTM rep for availability of all Dry-Treat products. Stone is a natural product, please expect some beautiful color variation.



16 x 24 x 5/8 in Fine Chiseled or Honed finish (stock)



# THE STONE COLLECTION

## Crema Bella Limestone



**Dimensional** : shown in honed finish ( 1/2", 3/4" & 1-1/8" Thickness x 4" Width x Random Length)

### Custom Finishes

(subject to 500 sq ft minimum quantity and 8-10 week lead time)



**Honed** (stocked in 16 x 24 x 5/8)



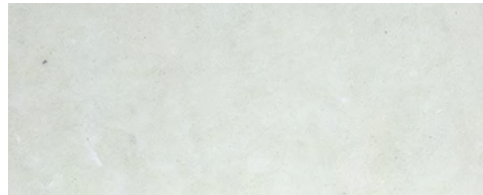
**Fine Chiseled** (stocked in 16 x 24 x 5/8)



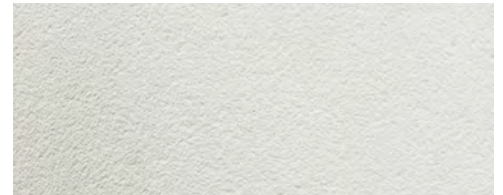
**Bush-Hammered**



**Canyon Chiseled**



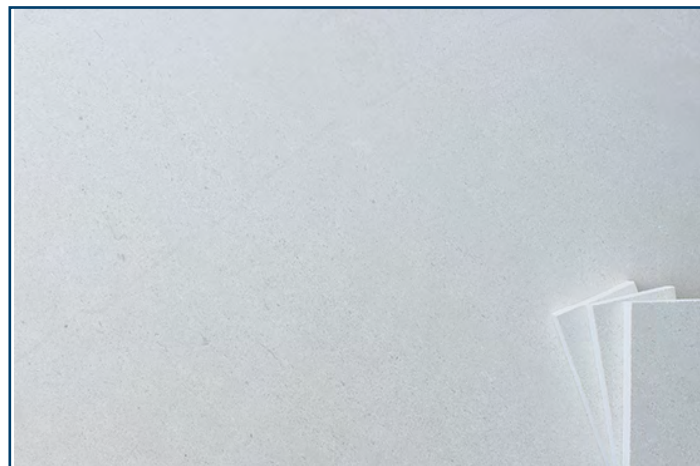
**Brushed**



**Fine Sandblasted**

*Architects, Designers & Dealers:* We offer boards, boxes and samples for your libraries and showrooms.

Contact your CTM rep / dealer dept to order.



### FULL SIZE PIECES & SAMPLES

Free full-size or samples available. Please provide freight account. Contact your CTM rep / dealer dept to order