



Portuguese Limestone

Amendoa

Portuguese Limestone Collection includes the classic Gascogne Blue & Beige and the warm glow of Creme de Beja & Amendoa.

Finish: Honed (Vein Cut) **Stocked Sizes:** 12 x 24 x 3/8, 16 x 32 x 3/8 & Slabs: approx. 70 x 100 x 3/4 (stocked at LA warehouse)

Cut Sizes: (2-3 week lead time): shown below plus bullnose on any size. Custom sizes/ finishes: subject to 500 sq ft min. & 8-10 week lead time. ~ **Recommendation: seal with Dry-Treat 40SK™ Surface Consolidator then Dry-Treat STAIN-PROOF Original™ Sealer.** ~

Usage: Commerical & Residential; Interior & Exterior applications. Stone is a natural product, please expect some beautiful color variation.

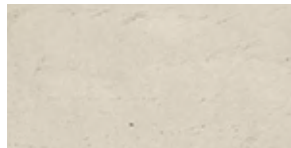


16 x 32 x 3/8 (stock)

Available Sizes (Cut-to-size = 2 - 3 week lead time)



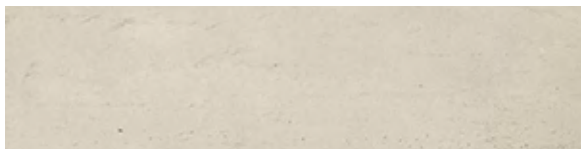
16 x 32 x 3/8 (stock)



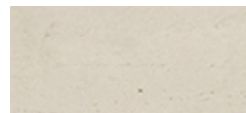
8 x 16 x 3/8



16 x 16 x 3/8



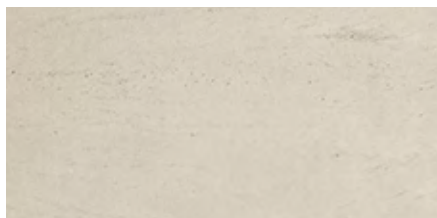
8 x 32 x 3/8



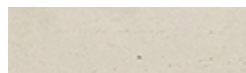
6x12 x 3/8



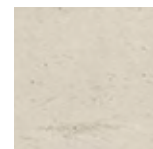
12 x 12 x 3/8



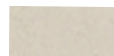
12x 24 x 3/8 (stock)



4x12 x 3/8



8 x 8 x 3/8



3x6 x 3/8



6 x 6 x 3/8